

LEVELIZED BILLING

What is Levelized Billing?

Levelized Billing is a program designed to shave the peaks and valleys off of your monthly electric bill, creating a more manageable and budget friendly bill. MCEPA looks at the last twelve bills plus the current bill to calculate a rolling average bill. Factors are in place to ensure that the over/short amount between the actual bill and the levelized bill stays at a manageable level. With Levelized Billing there is no need to settle the difference at the end of the year.

What are the requirements for Levelized Billing?

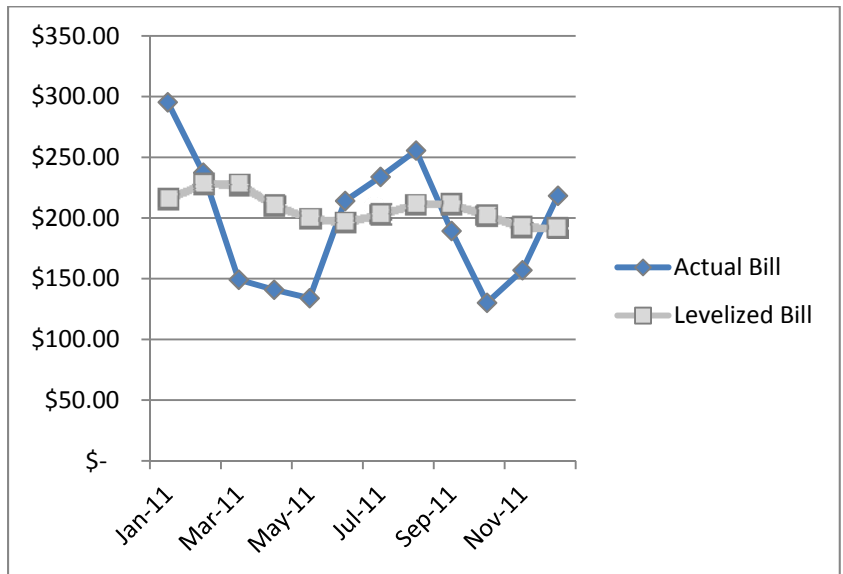
- Available to qualifying residential customers.
- Must have at least six (6) months non-termination history and account must not be past due upon enrollment.
- Enrollment will be limited to the months of April, May, June, September, October, and November.
- Customers who are terminated for non-payment, after enrolling in the program, will be disqualified from further participation in the program for a minimum period of six (6) months.
- Full payment of the levelized bill amount will be required each month. Partial payments will not be accepted.
- If a participant in the program fails to pay the entire monthly levelized bill amount in any month, he will be disqualified from further participation in the program. His account will be reconciled and if his actual payments have exceeded actual usage billing amounts, his account will be credited with the balance. If actual payments are less than amounts computed for actual usage, the customer's service will be terminated in keeping with the Association's policy dealing with termination of service.
- Each participant will be required to sign a participation agreement before enrolling.
- The Levelized Billing plan is subject in all respects to the Schedules of Rules and Regulations and the Standard Service Policies of the Association.

How do I calculate my levelized bill?

$$\text{Levelized Amount} = \frac{\text{Previous 12 Bills} + \text{Current Bill} + \text{Over/Short Amount}}{13} + \frac{\text{Over/Short Amount}}{\text{Over/Short Factor}^*}$$

*Over/Short Factor:

Amount	Factor
\$0.00—49.99	12
\$50.00—99.99	11.5
\$100.00—199.99	11
\$200.00—299.99	10.5
\$300.00—above	10



Sign Up:

Name: _____

Address: _____

Account Number: _____

Phone #: _____

Month: _____

I have read the above information and have decided to participate in the levelized billing program. I understand that removal from this program, either at my request or due to disqualification, requires that the outstanding balance be settled immediately.

Signature: _____

Date: _____